



MARCH 2026

# Petal Pusher

## UPCOMING EVENTS

### General Meeting

Monday, March 23, 2026  
Messiah Lutheran Church  
9:15 AM Meet and Greet  
10:00 AM Membership Meeting  
10:45 AM Program - Danielle Oxman  
Coordinator for Gray's Reef National  
Marine Sanctuary  
\*To attend, register on-line:  
[www.landingsgardenclub.com](http://www.landingsgardenclub.com)

### Garden Tour

Wednesday, March 25, 2026  
Melany Cress of Sage Adj. Wise  
Her home, 131 East 48<sup>th</sup> Street  
Savannah, GA 31405  
\*times and transportation to follow

### Field Trip - SCAD Studios

Wednesday, April 8, 2026  
10:00 AM  
Tour SCAD film studios and learn history  
of SCAD. Lunch to follow at Gryphon Tea  
Room  
\*transportation soon to follow

### April Buzz By...

Thursday, April 23, 2026  
6:00 PM - 9:00 PM  
BYOB and appetizer to share  
Martha Nesmith's Home  
21 Cabbage Crossing

### April General Meeting

Monday, April 27, 2026  
Messiah Lutheran Church  
9:15 AM Meet and Greet  
10:00 AM Annual Meeting and  
Luncheon - Meet and Greet Committee  
Chairs

Inspire to Grow Through Beautification,  
Preservation, Conservation, & Education



# THE LANDINGS GARDEN CLUB

## Beautification, Conservation, Education

### President's Message

Get ready to rock and roll! We've managed to weather the recent "surprise" cold snap. Some of us were shocked by the damage this late freeze inflicted on our plants and trees. I'm pleased to report that we only lost one fruit tree, a kefir lime, although our palms were less fortunate, and we'll have to wait and see if they recover. This chilly weather has become more common in recent years. With the help of UGA Extension, we've shared tips on our website about how to prepare for a late freeze. However, we're still uncertain about how to care for all the plants and trees that suffered damage. I'm no expert, so I reach out to fellow gardeners, garden centers, the internet, and the UGA Extension service. If any of our Master Gardeners have suggestions, please share your insights as we all have different experiences with various plants.

As the days begin to warm, I'm amazed to see so many of our plants coming back to life. It never fails to astonish me how 20-degree weather and strong winds can hit Savannah during winter. The new spring growth is nothing short of breathtaking!

The Landings Garden Club is winding down as we approach March and April. However, we have introduced new activities in addition to those mentioned in your yearbook, so keep an eye out for exciting events.

Many of our committees are diligently preparing for our start-up in September. We need YOU, our members, to get involved by finding committees that interest you. Let's work together to make the 2026-2027 year another fantastic one!

Our April meeting will feature a fun working lunch where you can meet all the committees to find the right fit for you. Each Committee Chair will host a table for you to explore and learn more about their group's activities. Our committee work is a great opportunity to share information, educate, and enjoy each other's company. If anyone wishes to switch committees, now is the perfect time to do so! Don't worry about hurting anyone's feelings – exploring new environments within our club is always beneficial.

We had a delightful new member brunch at Donna Slappey's home, attended by nearly 25 members. It's wonderful to see the social network we're building with so many fresh ideas. It was a pleasure to meet everyone, and I look forward to our continued involvement. A big thank you to Donna for sharing her lovely home with us.

Don't forget to check out our new website: [[www.landingsgardenclub.com](http://www.landingsgardenclub.com)]. I think many members (new and old) may not be aware of the website so take a look as we will be posting more updates there.

Warm regards,  
Gayle





*Save the date*

**THE LANDINGS GARDEN CLUB  
ANNUAL MEETING & CELEBRATION  
LUNCHEON**

**MONDAY APRIL 27, 2026**

**10:00 am - 11:30 am**

**MESSIAH LUTHERAN CHURCH - 1 WEST RIDGE ROAD**

**Join us for a delightful morning where you'll have the opportunity to meet our Committee Chairs and explore how you can get involved with your club.**

**Lunch will be included for \$20.00 per person.**

*Lunch Menu*

*Salad Bar with all the fixings*

*Selection of Hot Soups*

*Chicken Salad & Ham Croissants*

*Homemade Desserts by LGC*



**THE LANDINGS GARDEN CLUB**

*Committees Serve as the Foundation of Our Club*

**Awards**

**Bethesda Gardening**

**Birds and Conservation**

**Civic Beautification**

**Container Gardens**

**Floral Design**

**Holiday Gate Decorations**

**Horticulture**

**Hospitality**

**Membership**

**Newsletter**

**Programs**

**Publicity**

**Serenity Garden**

**Skidaway Farm Project**

**Social Media & Webs**

**Sparrow Field**

**Village Library**

**Ways & Means / Fundraising**

**Yearbook**

## *Find the committee that is right for you!*

At the upcoming April meeting, each Committee Chair will have a designated table for you to explore and learn more about their respective committees.

Here's some of what you can expect to discover:

- **Committee's Mission and Objectives**
- **Time Commitment:** Is it for the full year, monthly, or seasonal?
- **Physical Requirements:** Will it require dirty hands or clean hands?
- **Membership Needs:** How many members are essential for the committee's success?

*Remember, we are a working club and committee involvement is required for active membership*



## Fundraising Submitted by Beth Weathers

### Exciting News from the Fundraising Committee

#### Annual Holiday Fundraiser

We are delighted to share that Dawn Cordo and Joan Cunningham have kindly agreed to co-chair the Fundraising Committee. This year, we're thrilled to unveil the theme for our holiday fundraising activities: **Bulbs, Bows, and Mistletoe!** Expect a fresh outlook with a new focus and some exciting items available for purchase.



Additionally, we are developing several projects designed to enhance our club's visibility within The Landings community. However, we'd like to keep some surprises under wraps for now! More information will be revealed at our celebration luncheon in April.

We encourage both new and returning members to join us and contribute to this committee as we strategize our upcoming fundraising efforts for 2026 and beyond. It's Our Club...let's all get involved!

#### New for 2026, Spring Celebration: Online Silent Auction

We are excited to announce that we will be hosting an online silent auction from April 17 to April 26 to raise funds for our community projects.



Stay tuned for more details, which will be shared during the March meeting.

We welcome your ideas and donations to feature in the auction!



# Welcome MEET OUR NEWEST MEMBERS!

## Joan Cunningham



Joan and her husband, Clell “Skip,” reside in Oakridge and spent their first night at The Landings on October 25, 2025. After 50 years in Oklahoma City, they felt ready to embark on a grand adventure as they transitioned into retirement. A chance email about The Landings Discovery Tour prompted a visit, and by the second morning, they realized they had found their new home.



Joan’s passion for gardening blossomed in grade school, inspired by her parents and aunts who shared a love for plants. Family gatherings often included strolls through each other’s yards to admire the latest blooms. This passion carried into adulthood, eventually resurfacing when her son took up gardening, inheriting many of her pots and plants when she relocated.

One of Joan’s most cherished gardens was created after purchasing her own home. The hours she dedicated to selecting plants, designing, and nurturing her yard and patio were profoundly rejuvenating. Her last home in Oklahoma City was a true testament to her dedication, featuring raised beds and vibrant pots surrounding the pool, complemented by a stunning trellis that captivated from spring to fall.

For Joan, the garden is her sanctuary—where “just a few minutes” can easily stretch into much longer. Although vegetables have proven challenging, she enjoys gardening that is mostly free from deer, thanks in part to her inside-outside dog keeping a vigilant watch.

## Maura Almy



Maura has loved flowers for as long as she can remember. Her earliest garden memories come from her grandmother’s large vegetable garden, where she happily munched rhubarb and wandered through a treasured patch of lily of the valley, which lily’s remain especially close to her heart.



Her mother also had a deep love of flowers, particularly challenging varieties, and nurtured that curiosity in Maura by taking her to the New England Flower Show every year. This experience filled her with inspiration, learning, and a lifelong appreciation for beauty and plant diversity. It also instilled the practice of having fresh cut flowers in her home all the while being committed to responsible landscaping.

Maura’s primary garden remains in Connecticut, where many varieties of roses and peonies alongside other perennials are her favorites. In Georgia, she is still finding her footing. The seasons, soil, and ever-hungry deer feel unfamiliar but she’s learning how this landscape can support the plants she loves to nurture.

## Fran Johnson



Fran has been a resident of Palmetto since 2018, having retired from Tampa, FL. Previously, she was a member of The Landings Garden Club and is excited to rejoin.

Her passion for gardening blossomed in childhood, inspired by her mother’s stunning rose garden. Those roses became her first love in gardening. One memorable incident involved her toppling into one of her mother’s massive rose bushes. While it wasn’t quite a “wow” moment—more of an “ow” due to the thorns—it deepened her admiration for roses.

For Fran, gardening offers tranquility; after all, plants don’t voice complaints. Orchids have taught her humility over the years, and deer have made themselves quite comfortable in her yard. It often resembles a deer dining paradise, though she is quick to clarify that she isn’t the one providing them with corn.



## Serenity Garden

### Submitted by Martha Nesmith

Our February visit was quite lengthy. It was disheartening to witness the effects of this winter's harsh temperatures. After the frost, many plants had to be cut back to their base. Ferns, split-leaf philodendron, salvia, and wild ginger faced significant damage. We managed to fill four paper trash bags, and there was still more to do, so we plan to complete the pruning in March. Surprisingly, our pansies and snapdragons remained healthy and in bloom! With adequate watering and fertilization, the plants we pruned should rebound by late spring to early summer. A doctor from the hospital even stopped by to express gratitude for our efforts, which he said are greatly appreciated.

Spring can't arrive soon enough!

*We deeply appreciate the commitment our team has demonstrated in turning this garden into a serene oasis for reflection and renewal. If you haven't had the opportunity yet, we invite you to explore this lovely sanctuary, crafted for anyone in search of a tranquil space to contemplate. Located at the Anderson Cancer Institute on the Memorial Hospital Campus, the garden is easily accessible and welcoming to all who wish to experience its beauty.*



## Community Service

### Submitted by Georgia Klautzer

#### February Donations Update and Ambitious April Plans

We are thrilled to announce that our cash donations for February surpassed our expectations! Thanks to your generosity, we were able to provide 48 T-shirts—twelve for each team in royal blue, yellow, black, and gray—as well as a basketball for every team. These items will be distributed to the patients at GRHS participating in the Basketball Buzz competition.

#### Looking Ahead: Ambitious April

Next month has been designated as “Ambitious April,” during which we aim to gather numerous leisure items approved by Georgia Regional Hospital Savannah. Collection containers will be available at the meeting on April 27th, so let's fill these bins to the brim with donations!

As you embark on your spring cleaning, please consider setting aside the following items for our Ambitious April donations:

- DVD movies
- Fitness DVDs
- Arts and craft supplies - glue sticks, glitter, stencils, crayons, paints, markers
- Board games / Cards and card games
- Game consoles / Wii / PS3 games
- Radios / MP3 players / headphones
- Basketballs / footballs / volleyballs
- Bocce, tennis, and exercise equipment
- Musical instruments
- Monetary donations (to purchase decaf coffee and hot cocoa)



We and the patients of Georgia Regional Hospital sincerely thank you for your support! **THANK YOU!**

## Skidaway Farm Submitted by Phyllis Aaron



Over the last five months, the Skidaway Farm team has successfully harvested broccoli, collards, red cabbage, and green cabbage. Our final yield included 3 pounds of broccoli and 13 pounds of collards, which have been donated to the Savannah Union Mission to provide hot meals for those in need.

We collected soil samples and submitted them to the UGA Cooperative Extension Service for testing. Based on the results, we will amend the soil and prepare to plant our warm-weather crops.

A heartfelt thank you to all the ladies who cared for the vegetables this winter, contributing to the success of our harvest.



## Sparrow Field Submitted by Dawn Cordo



Our Friday work parties officially began on March 6. Currently, we are pruning dead and spent plants in hopes that they will thrive again with the arrival of Spring. In the back, beyond the pond, we have cleared and fenced an area where we planted three camellia bushes in memory of Lynn Wrenn. A Celebration of Life will be held in this space at a future date that will be determined by her family.

We gather every Friday from March through October, weather permitting, from 8:30 a.m. to 9:30/10:00 a.m. Our time together is filled with joy, storytelling, learning from one another, and leaving with a deep sense of accomplishment, knowing we've helped enhance the beauty of Sparrow Field, a cherished amenity of The Landings.

Garden club members are encouraged to join us as often as possible. Even attending once or twice a month would be greatly appreciated. No prior experience is necessary! You'll have the chance to learn about plants that attract butterflies, birds, and other wonderful creatures in nature. We often uncover delightful aspects of nature to enjoy as well.

If you have any physical limitations that prevent you from digging in the dirt, we have two informational kiosks that need attention. Updating articles and gathering photographs is always essential to keep our information up-to-date.

Just like in your own garden, there's always something to be done, and many hands make light work. Everyone is welcome to join us, and we look forward to seeing you on Friday morning. For more information, please reach out to Dawn Cordo.



# Scholarship Award



## The Landings Garden Club proudly recognizes our Scholarship Honorees: Spring 2025 – Pat Barry / Spring 2026 – Dawn Cordo



Our Fundraising Chair and her committee members put in tremendous effort throughout the Club year to raise funds, enabling The Landings Garden Club to contribute net profits to charitable initiatives. One of these initiatives is a scholarship fund managed by the Garden Club of Georgia. The donations from our Club, along with those from Clubs across the State, provide deserving Georgia college students the chance to apply for grants that support their education in gardening or environmental studies. Depending on the total contributions from Georgia Clubs and the number of applicants, awards can reach up to \$5,000 per student, which is a significant amount.

Our Club proudly donates \$1,000 each year, allowing us to honor a member of our community. Last spring, Pat Barry was recognized as our Honoree, and this spring, it is Dawn Cordo. We are truly grateful to our dedicated fundraising volunteers, whose relentless efforts make our participation in this vital process possible.

### **Pat Barry - 2025 Scholarship Honoree**

Pat has been a committed member of The Landings Garden Club since 2009. She has taken on various creative and leadership roles within the Club, showcasing her dedication. Notably, she has served as Chairperson for the Container Gardens committee, which is responsible for designing and maintaining container urns throughout our community for residents to enjoy. Additionally, Pat has generously volunteered her time on the Serenity Garden committee and has given presentations on floral design. Her passion for flowers also leads her to participate in local flower shows, benefiting the public.

It is with great honor that we recognize Pat Barry as Honoree of the 2025 scholarship.



### **Dawn Cordo - 2026 Scholarship Honoree**

Dawn has been an engaged member of our Club since 2016, taking on the role of Chairperson for the Sparrow Field Committee. Sparrow Field is a large pollinator habitat garden located in The Landings community, managed by the Skidaway Audubon Society. Under Dawn's leadership, the committee is dedicated to planting, weeding, and maintaining the garden, which attracts numerous birds, insects, and butterflies, particularly Monarchs. Additionally, Dawn acts as the liaison to Skidaway Audubon and actively participates in their organization. Her remarkable contributions to the garden's success are both inspiring and commendable.

Sparrow Field welcomes everyone who wishes to appreciate its beauty and serves as an excellent opportunity for research on plants and pollinators. Dawn meticulously documents garden activities and writes articles about its seasonal changes to educate Club members and visitors to the Club's website.

As Chairperson, Dawn is also a member of our Board of Directors. Her experience, leadership abilities, and insights are truly invaluable.

Always eager to assist, Dawn played a crucial role in the success of this year's holiday fundraising efforts, utilizing her historical knowledge to guide the fundraising team. She is consistently willing to volunteer, quick to lend a hand, and approaches every task with a smile and a positive attitude.

We are delighted to recognize Dawn Cordo as the Honoree of the 2026 scholarship.

# Horticulture

Submitted by Kathy Jacobs

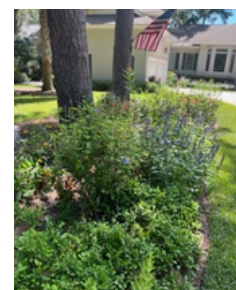
## *Attracting Birds, Butterflies and Other Wildlife to Your Garden*

While we eagerly await signs of spring in our glum winter landscape and cheer for the return of our many bird species, now is a great time to plan to add native plants to encourage the development of wildlife habitats. From trees, shrubs, and flowers, we can add more native species to support the interlocking continuum of life in our gardens. On Feb. 26, the New York Times reported a new research study published in the journal Science which shows that bird populations are declining faster than in the past. This decline is more severe with bird species that depend on insects. National Wildlife Federation, one of our most important organizations for conserving wildlife since 1936, suggests we aim for a space that is 70% native plants to have the optimum benefit for wildlife.

Many of us love having bird houses and protected bird feeders to enjoy our bird friends up close and encourage their visits. We have 2 bluebird houses and 5 bird feeders on our property. We love seeing painted buntings, hummingbirds, cardinals, wrens, orioles, woodpeckers, and a plethora of birds and their offspring in the course of the year. But feeders are not a required component in encouraging wildlife.

The National Wildlife Federation states that birds, butterflies, bees, and other wildlife are attracted by 4 essential elements: food, water, cover, and a place to raise their young. Creating a pollinator garden planted with mainly native species supports a beautiful haven for birds, bees, and butterflies. Keeping chemicals to a minimum and using good ecological methods will help keep our island sustainable. Our gardens on this island become part of the huge chain of habitats in Georgia, as well as many other states and countries, that sustain our birds and insects on their long seasonal migrations. Lists of native trees, shrubs, and other plants can be found in Professor of Entomology and Wildlife Ecology Dr. Doug Tallamy's excellent books Bringing Nature Home and Nature's Best Hope. They have extensive lists of Southeast native trees, shrubs, vines, herbaceous perennials, and grasses, including their ecological and landscape functions. Georgia Native Plant Society and the spring native plant sale at Coastal Wildscapes provide knowledge and plant sources. You can also use information from the internet, YouTube, and other garden books to research plants' size, color, and growth needs.

The National Wildlife Federation has an excellent Habitat Essential Checklist to help you plan and evaluate whether you have the necessary elements in your garden to become a certified habitat. Many of us have gardens which already meet the detailed standards; others will need work to improve their wildlife habitat. These requirements have changed since 2021 when our property first became certified. This checklist is a great tool to use before you go online to certify your garden. Go to [www.nwf.org/certifiedwildlifehabitat](http://www.nwf.org/certifiedwildlifehabitat) to qualify. There is a \$25 fee which pays for a lifetime certification as long as you own your property. You will be proud to put up your certification sign encouraging others to become part of this wonderful island community of gardeners who love and support wildlife.





# Birds and Conservation

## Submitted by Angie Stewart

### Native Plant Spotlight: River Birch

#### **Betula nigra - A Southern Charmer with Serious Ecological Value**

If trees had personalities, River Birch would be that easygoing friend who looks great without trying too hard. Native to Coastal Georgia and the Southeast, this tree is right at home in our climate and brings beauty and purpose to the landscape.



River Birch is best known for its peeling, cinnamon-colored bark, graceful multi-trunk form, and soft green leaves that dance in the breeze. It thrives in warm, humid conditions and actually doesn't mind wet feet, making it a great choice for low spots, near ponds, or anywhere that tends to stay a little damp after a good rain.

But this tree isn't just nice to look at. River Birch is considered a keystone plant, which means it supports far more life than you might expect from a single tree. Think of it as a cornerstone of the local ecosystem. When keystone plants are present, everything else has a better chance of thriving. They support hundreds of species of native insects, especially caterpillars. Those caterpillars are essential food for birds raising their young. Without them, many birds simply can't survive. Planting a River Birch is like putting out a "welcome" sign for nature.

River Birch quietly attracts all kinds of wildlife:

- Hummingbirds and other birds stop by to feed on tiny insects
- Songbirds forage and nest in the branches
- Butterfly and moth larvae rely on its leaves
- Pollinators are drawn to the rich insect activity around the tree



River Birch typically grows 40–70 feet tall and 30–50 feet wide, and it grows fairly quickly. Give it some breathing room and it will reward you for it.

The good news? It's not fussy.

- Pruning: Very minimal. Mostly just remove dead or crossing branches.
- Late summer or early fall is best. (Avoid late winter or early spring—River Birch can "bleed" sap then. It won't hurt the tree, but it can be a bit messy.)
- Water & soil: It loves moist, well-drained soil, especially when young. Once established, it's fairly drought-tolerant, though it will always appreciate mulch to keep roots cool.
- Maintenance: Low. It naturally drops small twigs and leaves, so it's happiest in landscapes that lean a little more woodland than manicured.

So when you spot that curling bark or hear birds fluttering through its branches, you'll know your tree is doing exactly what it was meant to do.

*Native plants don't just belong here—they make our gardens come alive.*

# Birds and Conservation

## Submitted by Sue Hamlet

### **WARNING!**

## **DANGEROUS INVASIVE INSECT NOW IN GEORGIA**

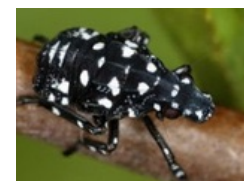
## **THE SPOTTED LANTERNFLY**



The Georgia Department of Agriculture confirmed initial sighting of the invasive Spotted Lanternfly in Georgia in 2024. This Asian species poses a threat to agricultural crops and trees by feeding on their sap.



- Appearance: These pests are black with white spots and transition to red as they mature.
- Size: Adults measure about 1 inch long and ½ inch wide.
- Eggs: Their eggs appear as dull brown masses, approximately 1 inch long, typically laid on smooth surfaces like trees, bricks, and other materials.



It is crucial to eliminate both the eggs and adults whenever possible. While complete eradication of this species from Georgia may not be feasible, we can contribute to tracking and controlling its spread.

If you come across a Spotted Lanternfly, take a clear photo of the insect and kill it. Report your sighting to the Georgia Invasive Species Task Force at: <https://www.gainvasives.org/slf/report/>.



## **Now is the Time to Learn and Grow**

### **Flower Show School - Course 1**

- What: Flower Show School - Course 1 (Sponsored by the Camellia District)
- When: April 13-16, 2026
- Where: Central Georgia Technical College, 3300 Tech Drive, Macon, GA 31206
- Cost: \$155 for Full Course Credit (Pre-Registration Required)

Seize the opportunity to enhance your knowledge in horticulture and design by registering now. The Flower Show School aims to train and accredit Flower Show Judges while promoting beautiful and educational flower shows. According to Flower Show Judges, this course will unleash your hidden creativity and connect you with fellow flower enthusiasts, fostering lasting friendships. You can take the course for credit or simply attend the lectures led by experienced instructors.

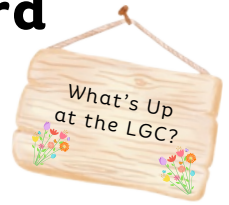
For Inquiries:

- School Chairman: Anita Allen / Email: [wildverbena@gmail.com](mailto:wildverbena@gmail.com)
- Registrar: Annelle Moore / Address: 341 Wesley Circle, Macon, GA 31204  
Email: [\[annellemoo@aol.com\]](mailto:annellemoo@aol.com) (<mailto:annellemoo@aol.com>)



# The Landings Garden Club - Community Board

This and That, Tidbits of Interest...



**Our New Website is Live**

**<https://www.landingsgardenclub.com>**

REMINDER...



## The LGC Skidaway Island Birding Challenge

Are you the winner of a \$50 gift certificate from Wild Birds Unlimited? Don't forget to bring your bird count to our March 23rd meeting to see if you spotted the most birds. There's still time to download your form. Just visit the link below and scroll down to Checklist, click & print:

**<https://georgiabirdingtrails.com/birdingbasics>**

Good luck seeing those feathered friends!

## It's Time Again to "Buzz By"

April 23: 6:00 - 9:00 pm

Martha Nesmith's Home

21 Cabbage Crossing

BYOB and Appetizer to Share



Don't Forget...April 1 - 3  
Garden Club of Georgia Annual Convention  
Crowne Plaza - Atlanta SW  
Peachtree City, GA  
for more info: [gardenclubofgeorgia.org](http://gardenclubofgeorgia.org)

Spring Native Plant Sale  
SATURDAY, APRIL 11, 2026  
Ashantilly Center  
15591 Highway 99, Darien, GA  
9am - 1pm  
[www.coastalwildscapes.org](http://www.coastalwildscapes.org)  
Plant Vendors:  
• Florabundance Gardens  
• All the Buzz  
• Naturescapes  
• Georgia Native Plant Society  
Coastal Plain Chapter



## Local Tour of Gardens & Homes

**Arsley Park - April 11**

**[www.ardsleypark-gardenclub.org](http://www.ardsleypark-gardenclub.org)**

**Savannah NOGS Tour of Hidden Gardens**

**Harper Fowlkes House - April 17 & 19**

**[www.gardenclubofsavannah.org](http://www.gardenclubofsavannah.org)**

Free

A generous supply of river rock available, sufficient to cover a cart path. The rocks have been thoroughly cleaned of organic matter and are packaged in double grocery bags. Additionally, we have weathered railroad ties that were previously used to contain the rocks, which could be suitable for a raised bed.

For further information, please contact: Judy Anderson.

## ***A Note From the Corresponding Secretary...***



Correspondence for the month of February:

Get Well Card to Sally Dunphy

Card and Donation to Skidaway Audubon in memory of Lynn Wrenn

Card and Donation to Senior Citizens Learning Center in memory of Martin Campbell Thomas

Sympathy Card to the Family of Maggie Richard (former LGC member)



Thank you,  
Barbra Martin

# Hospitality

## Submitted by Jen Johnson

As a reminder if your last name starts with the letter **N - S** Please bring goodies to the March meeting...

### Contributions for General Meeting Social Hour

Members with the last names listed below are asked to bring goodies for the General Meeting Social Hour:

- **E - H: January 26 Meeting**
- **I - M: February 23 Meeting**
- **N - S: March 23 Meeting**
- **T - W: April 27 Meeting**



# Treasurer's Report

## Submitted by Martha Nesmith

TREASURER'S REPORT FEBRUARY 2026					
		OPERATIONS		WAYS & MEANS	
BEGINNING BALANCE		\$11,142.39		\$11,175.48	
DEPOSITS		\$1,294.00		\$0.00	
SUBTOTAL		\$12,436.39		\$11,175.48	
EXPENDITURES		\$1,863.62		\$3,667.19	
ACCOUNT BALANCE		\$10,572.77		\$7,508.29	
MINUS RESERVES	*	\$2,500.00		\$541.21	Hesse School Grant \$41.21 BAL
					Arbor Day Grant \$500
AVAILABLE BALANCE		\$8,072.77		\$6,967.08	
* Funds from Savings Acct set up at Club inception. Must remain a reserve.					
ACCOUNT BALANCE INCLUDES FEBRUARY EXPENDITURES NOT YET CLEARED AT CHASE BANK					

# The Landings Garden Club, General Membership Meeting Minutes:

February 23, 2026

Submitted by Phyllis Aaron, Recording Secretary

Meeting was called to order at 10:05 am. The Pledge Of Allegiance was recited as well as Mindfulness Reflection.

Gayle announced 4 new members and 3 guests and welcomed them to our meeting.

A motion by Phyllis Aaron and seconded by Martha Nesmith was made to accept the minutes as published in the Petal Pusher which was approved by a show of hands.

Barbara Martin - Corresponding Secretary reported that Maggie Richard had passed away. A card and a donation were sent to Skidaway Audubon for Lynn Wrenn. A card and donation to the Senior Citizen's Learning Center was made for Martie Thomas.

A card was sent to the family of Maggie Richard (Maggie was a former member who moved to Colorado) and of course, a card was sent to Sally Dunphy.

Barbara Martin - Corresponding Secretary, headed the Nominating Committee consisting of Lisa Hall, Linda Moore, Barbara Victor, Pam Patterson, and Angela Devore. She thanked her committee for all their hard work. The slate of officers for the coming year include:

President: Gayle Ridgway

Vice President: position is still pending

Treasurer: Martha Nesmith

Recording Secretary: Phyllis Aaron

Corresponding Secretary: Barbara Martin

\*\*We are still missing a Vice President.

Treasurer's Report was on the website under Resources. We will be giving the charitable gifts as listed in the yearbook with the addition of the Marine Science Center in place of Sparrow Field. It will fund 50 children in their program.

Angie Stewart - Membership Chair, reported that we have 88 active members and 11 inactive members for a total of 99 members.

Jen Johnson - Hospitality Chair, thanked Patsy Bowden who took over for Jen last month when she was away. We have one more meeting. Those responsible for refreshments are those women whose last names start with n-o-p-q-r-s. The April meeting will be a catered lunch. Hopefully, everyone will bring a dessert.

The newsletter goes out on the 15th of each month & is posted on the website.

Georgia Klautzer said the Georgia Regional Hospital was very pleased with our donations and hot chocolate packets. The hospital is having a game day in an effort to raise money. Georgia passed a basket to collect money to buy 150 t-shirts in 4 colors for the games.

Beth Weathers and Dawn Cordo are working together on ideas to raise money for LGC.

Pam Patterson reported on the On-Line Auction coming in April. She has already received donations from Lisa of a hummingbird feeder and Phyllis, her pottery. Gayle said that our guest speaker will be donating some of her products and Barbara will ask for a donation from ACE Hardware.

## LGC Membership Meeting Minutes: February 23, pg. 2

Birds and conservation chair, Sue Hamlet, reported that there was an article in the Petal Pusher on Hummingbirds. There are pictures of hummers on the e-bird app. On March 20-26, there will be a bird-watching challenge. There will be a checklist on the Petal Pusher to use with a prize of a \$50 gift certificate. We should bring our lists to the next meeting.

There are before and after pictures of the Blue Star Monument at the TLA.

Sparrow Field: Dawn Cordo, will be starting up soon. It is on Fridays from 9:00 am to 10:30 am.

### President's Report:

The next Buzz By is April 23rd at Martha's Nesmith's home.

Gray's Reef speaker has been moved to March.

The Annual Meeting is in April. The Chairpersons of the various committees will be on hand to explain what their committee does and answer questions.

### Old Business:

Gayle explained the difference between Bylaws and Policies and Procedures.

Martha has applied and filed for our 5013C.

Gayle explained the levels of membership, active, inactive, honorary (bestowed on Dixie Diffenderfer- no dues), and Subscribing (from the GGC- \$35).

There are 7 board meetings and 7 general membership meetings per year.

Still need a VP to share duties with the President and you would be under no obligation to become President. You may if you wish, but it is open ended. Gayle hopes someone will volunteer.

Barbara Victor wanted to thank Gayle, Martha, Angie, and Lisa Hall for all they have done.

Gayle explained the difference between by-laws and Policies and Procedures and said there would be a vote on them at a future meeting.

### New Business

Gray's Reef speaker will be on March 23rd.

We will be going to SCAD in April.

On April 1,2, 3 is the GCG 98th anniversary meeting.

Hort Short: How to Divide and transplant perennials that are overgrown and crowding. You divide in the opposite season. Our zone is 9A in Georgia.

Gayle announced that a \$1000 scholarship money will be awarded in honor of Dawn Cordo.

Raffle was won by Maura Almy who will be donating the arrangement to the Oaks.

The meeting ended at 10:53 am. So moved by Barbara Victor and Georgia Klautzer.



## The Landings Garden Club Mission

- To function as an educational organization interested in all phases of gardening and related subjects.
- To aid in the protection of forests, marshes, native plants, wildflowers and birds.
- To maintain membership in and coordinate club interests with those of The National Garden Clubs, Inc., The Garden Club of Georgia, Inc., and The Deep South Garden Clubs, Inc.



**The Landings Garden Club**  
*Is a Federated Club and a proud member of*  
National Garden Clubs, Inc.  
The Deep South Garden Clubs, Inc.  
The Garden Club of Georgia, Inc.

